



BUSINESS SCHOOL . PARIS

Grande École – The Ivy League of Business Schools in France



Master of Business Administration








MBA

Engineering Management

istec-me.org



SUMMARY

1. **Presentation of ISTECH Business School** 
2. **Accreditation and Labels** 
3. **Academic Focus: Engineering Management** 
4. **Program Overview and Curriculum** 
5. **Academic Excellence Starts with Exceptional Faculty** 
6. **10 Compelling Reasons to Pursue a Master's Degree at ISTECH Business School** 
7. **Empower Your Next Move** 

Welcome to ISTEC Business School. Paris

At ISTECH, we don't just teach management—we empower you to master it. Our Bachelor's program is built to sharpen your ability to think strategically, understand business dynamics, and adapt to an ever-changing world.



LAURENT PLOQUIN
Director General of ISTECH Business School

At ISTECH, we don't just teach management—we empower you to master it. Our Bachelor's program is built to sharpen your ability to think strategically, understand business dynamics, and adapt to an ever-changing world.

Our commitment to academic excellence is reflected in our learning-by-doing methodology, which ensures that students can seamlessly integrate management theories into practical business applications.

What sets ISTECH apart? Real-world immersion from day one. Through our learning-by-doing approach, you won't just learn management, you'll apply it in professional settings, gaining the expertise to lead and innovate with confidence.

ISTECH offers a unique advantage among Grandes Écoles (CGE). With 80% of our students actively engaged in work-study, ISTECH remains committed to providing industry-relevant education and career readiness. Choosing ISTECH means embracing a rigorous, immersive, and future-focused academic experience that enhances professional success.

ISTECH, A School of the Imparare Group

IMPARARE, through its schools—ISTECH, EEMI, Skale, and Skillogs—redefines education with an innovation-first approach that prepares students to lead in a fast-changing world.

Our MISSION is to fuse advanced technology with hands-on learning, ensuring students gain the practical expertise and strategic vision needed to excel in modern industries.

Our VISION is to make future-focused, multidisciplinary education accessible to all, empowering learners from diverse backgrounds to thrive in an increasingly digital and interconnected economy.

We are committed to reshaping higher education with a bold, forward-thinking model that blends academic excellence, industry relevance, and groundbreaking digital innovation.

ISTEC's Journey of Excellence: Milestones & Achievements

1961

Establishment of ISTE, the Higher Institute of Science, Technology, Economics, and Commerce.

1978

Official recognition by the French government, affirming ISTE's academic standing.

1986

ISTE's diploma approved by the Ministry of Higher Education, Research, and Innovation

2013

The Bachelor's degree receives official accreditation from the Ministry of Higher Education.

2018

ISTE joins the Conférence des Grandes Écoles (CGE), an elite network of France's top engineering and business schools.

2020

The French Ministry of Higher Education officially approves the Diplôme Visé Bac+5 (Master's degree).

2021

Formation of the Imparare Group and the ISTE x EEMI Incubator, fostering multidisciplinary innovation and entrepreneurship.

2022

ISTE becomes a member of AACSB, marking the start of its international accreditation process

2023

ISTE joins EFMD Global and further strengthens its accreditation efforts. The school also receives the "Bienvenue en France" label, recognizing its commitment to welcoming international students.

2024

ISTE expands its global footprint with the opening of its first campus in Chongqing, China.

2025

2025 - Earns a state-accredited MBA, certified at Bac+5 level (RNCP Level 7) and officially recognized by the French Ministry of Higher Education, Research and Innovation.

- ISTE partners with the UAE-based ATMS Education Group to expand its BBA and MBA offerings in the Middle East.

Our Values

SOLIDARITY

Mutual aid. Collaboration.
Kindness.

BOLDNESS

Imagination. Anticipation.
Decision.

CURIOSITY

Openness. Astonishment.
Innovation.

RESPECT

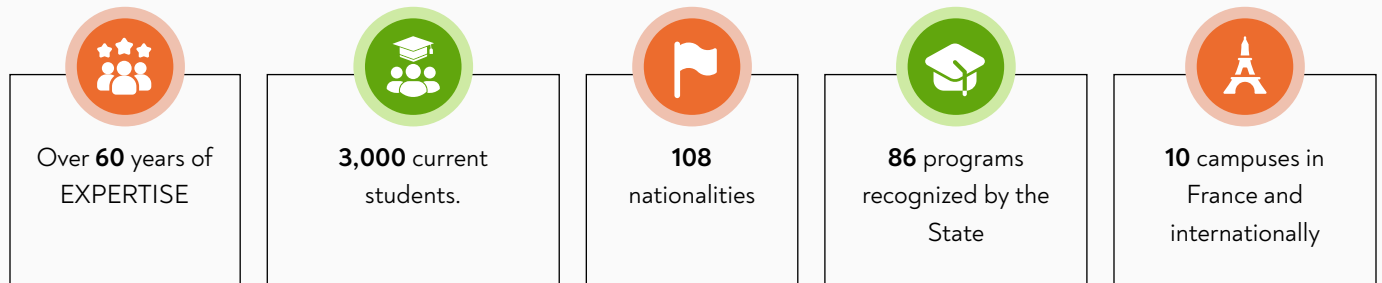
Listening. Tolerance.
Humility.

ENGAGEMENT

Involvement. Initiative.
Responsibility.



ISTEC has seen significant growth, with a diverse student body and numerous recognized programs. The school is part of a larger educational group, enhancing its reach and resources.



3500 partner COMPANIES

91.7 % of the Grande Ecole Program graduates found employment within 6 months*

100% net employment rate for Bachelor's graduates*

*CGE 2022 survey conducted on 2021 graduates

Pedagogical Positioning

A Dynamic, Human-Centered Learning Approach

At ISTEC, we are committed to fostering individual growth and success, ensuring students gain the knowledge, skills, and perspective to thrive in an ever-evolving world.

Our educational approach is built on collaboration, innovation, and ethical leadership, shaping tomorrow's business leaders through four key pillars:

-  **New Business Models:** Students explore alternative business strategies, gaining the expertise to design, launch, and manage innovative, resilient enterprises.
-  **Global Issues:** We cultivate a profound understanding of environmental and economic challenges, equipping students with the knowledge and skills to create innovative, sustainable business solutions.
-  **People & Organizations:** Leadership starts with people. We emphasize responsible management, equity, and the creation of inspiring workplaces.
-  **Humanities:** Beyond business, we integrate languages, philosophy, and history to refine critical thinking and broaden perspectives.

Our faculty is a dynamic mix of renowned researchers and industry experts, blending academic excellence with practical insights. Through hands-on learning, real-world applications, and an immersive curriculum, ISTEC equips students to shape the future's economic, social, and inclusive progress.

Accreditation

Since 2024, ISTECH has been eligible for the EFMD accreditation process.



Labels

In the process of accreditation

The **ISTEC Business School MBA** is a flagship executive education program designed to develop ambitious leaders with a global outlook. Aligned with the provisions of French education law, this program is recognized at the **BAC+5 level**, equivalent to a master's degree in the **French higher education system**. Upon graduation, students are eligible to pursue doctoral-level studies such as the **DBA** or **EDBA**.

Graduates of the **ISTEC MBA** program earn **90 ECTS (European Credit Transfer and Accumulation System)** credits, ensuring the degree is recognized across European universities. This underscores the academic value, mobility, and international credibility of the **ISTEC MBA**.

ISTEC, a proud member of Campus France, received the "**Bienvenue en France**" label in **2023**, highlighting its commitment to creating a welcoming and supportive environment for international students.



ISTEC Business School is proud to be part of France's prestigious Grande École system, an exclusive group of top universities known for strong academics, competitive admissions, and a long-standing reputation for excellence. Often compared to leading institutions like the Ivy League in the U.S., these schools offer exceptional learning environments, strong industry connections, and access to powerful alumni networks.

Officially recognized by the **French Ministry of Higher Education** and accredited by the CEFDG to confer the **Grade de Master (Bac+5)**, ISTECH is ranked among the country's leading business schools, preparing graduates for leadership roles in management and entrepreneurship on a global scale.



Qualiopi certification acknowledges training providers that meet the government and regional quality standards, ensuring excellence in education for trainees.

ISTEC has been awarded this quality certification for the following areas:

- Training programs
- Experience validation initiatives
- Apprenticeship training

This recognition reinforces ISTECH's commitment to delivering high-quality, impactful education tailored to professional success.



Accreditations and labels serve as key benchmarks of excellence, signifying a business school's quality and global recognition. Awarded after rigorous evaluation, they assess the institution's education standards, research impact, and strategic vision. These distinctions enhance credibility, helping business schools stand out in a competitive landscape and attract both students and recruiters.

Academic Focus: Engineering Management

Bridging Engineering Expertise with Strategic Leadership for Career Advancement.

This program is designed to equip experienced professionals with the leadership, strategic management, and technological insight required to navigate complex engineering and business challenges. By integrating management principles with technical expertise, graduates will be empowered to lead innovation, operational efficiency, and industry transformation in engineering-driven organizations.

This MBA in Engineering Management is structured to meet the unique needs of working professionals, ensuring a balance between technical mastery and leadership effectiveness.

What You Will Gain:

- **Strategic Leadership in Engineering** - Develop executive-level leadership skills to drive innovation, manage cross-functional teams, and align technological advancements with business strategy.
- **Technology-Driven Business Management** - Gain expertise in managing engineering operations, supply chains, and emerging technologies within competitive industries.
- **Innovation and Project Management Excellence** - Master methodologies in project planning, agile management, and risk assessment to ensure efficiency and adaptability in engineering ventures.
- **Financial Acumen for Engineering Leaders** - Build financial and budgetary competencies to optimize resource allocation, cost control, and strategic investment decisions in engineering-driven enterprises.
- **Regulatory Compliance and Ethical Governance** - Navigate industry regulations, sustainability initiatives, and ethical business practices essential for engineering leaders in a global landscape.
- **Operational Excellence in Engineering Organizations** - Optimize engineering workflows and performance metrics to enhance efficiency and long-term profitability in complex business environments.
- **Executive Communication and Stakeholder Engagement** - Strengthen interpersonal, negotiation, and leadership communication skills to influence stakeholders and drive strategic initiatives effectively.

The MBA in Engineering Management empowers working professionals to bridge the gap between engineering and business leadership, providing the skills needed to drive innovation, optimize operations, and lead technical teams with strategic vision. By integrating technology management, financial strategy, project execution, and executive decision-making, graduates are equipped to navigate complex engineering industries with confidence. This program fosters career advancement and organizational impact, preparing professionals to lead in an evolving, technology-driven world.



Program Overview

MBA in Engineering Management

This MBA in Engineering Management is designed for working professionals seeking to elevate their leadership capabilities while integrating business strategy with technical expertise. The program empowers engineers, project managers, and technical specialists to bridge the gap between engineering and executive decision-making, ensuring they thrive in today's technology-driven industries.

Program Structure

The program is structured across three semesters, offering a balanced combination of leadership training, business fundamentals, and specialized engineering management courses to meet the demands of professionals juggling careers and education.

Semester 1: Foundations of Leadership & Business Strategy

This semester develops executive communication, negotiation, entrepreneurship, and financial acumen, equipping professionals with strategic, innovation-driven leadership skills.

Semester 2: Applied Engineering and Business Management

This semester equips professionals with project management, risk mitigation, sustainability, and data analytics skills, enabling them to optimize operations and drive innovation in engineering-driven industries.

Semester 3: Applied Learning and Professional Growth

This semester emphasizes hands-on learning, with a Capstone Project or Thesis tackling industry challenges and an Internship Report ensuring real-world application for leadership readiness.

Why Choose This Program?

- **Strategic Career Advancement** - Equip yourself with executive-level leadership skills to transition into managerial and decision-making roles in engineering-driven industries.
- **Balancing Technical Expertise with Business Acumen** - Master financial management, strategic operations, and project leadership while maintaining a strong technical foundation.
- **Future-Focused Curriculum** - Stay ahead of industry trends with courses in data analytics, sustainability, and risk management, preparing you for evolving leadership demand.
- **Industry-Relevant Curriculum** - Integrates engineering, business, and technology to prepare professionals for cross-functional leadership roles.
- **Immediate Workplace Application** - Apply practical insights from case studies, projects, and analytics directly to your current professional challenges.

This program equips professionals with strategic frameworks to manage complex engineering projects and mitigate operational risks through Operations & Project Management and Risk Management in Engineering. Additionally, courses in Environmental & Sustainable Engineering and Data Analytics for Engineering Management empower leaders to drive sustainability initiatives and make data-driven decisions that enhance efficiency and innovation.

Program Curriculum

Build Your Journey

- Award: **Master of Business Administration in Engineering Management**
- Credits: 90 ECTS
- Duration: 12-15 months / 3 semesters

Semester 1 & 2 (60 ECTS)

Semester 1:

1. Communication and Negotiation Skills
2. Entrepreneurship & Innovation
3. Financial Management
4. Organizational Behaviour & Leadership
5. Management Information System
6. Managerial Economics

Semester 2:

7. Marketing Management
8. Operations & Project Management
9. Research Methods
10. Environmental & Sustainable Engineering
11. Data Analytics for Engineering Management
12. Risk Management in Engineering

Semester 3: Capstone & Practical Exposure – 30 ECTS

1. Capstone Project / Thesis
2. Internship Report

Your Faculty: Leaders in Business & Academia

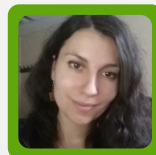
ISTEC's faculty comprises experienced academics and industry professionals who bring a blend of theoretical expertise and real-world insights. Their commitment to quality education and innovation ensures students gain the skills needed to excel in global business



Mr. Daniel Pearce



Dr. Colm Hickey



Dr. Gabriella



Dr. Jean Philippe Serbera



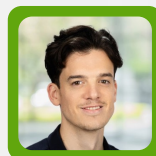
Mr. Sean Kemp



Dr. Peter Stokes



Dr. Ioannis Dermitzakis



Mr. Kees Smeets



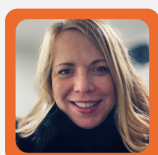
Mr. Adam Raman



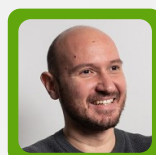
Dr. David Gordon



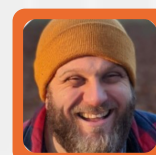
Dr. Clayton Davies



Ms. Catherine Bone



Dr. Alex Tziamalis



Mr. Matthew Rogers
Draycott



Dr. Henry Sidsap

MBA Class at ISTEC Business School



Virtual Live class



Assignment



Business Presentation



Western-qualified Faculty



Group Discussion



Class Activity



Interdisciplinary Approach



Diverse Peer Group

10 Compelling Reasons to Pursue a Master's Degree at ISTEC Business School

- International Prestige with Official Recognition - Earn a globally respected degree accredited by the French Ministry of Higher Education, ensuring academic excellence and international recognition.
- Elite Business School in Central Paris - Join a Grande École of Management located at the heart of Paris, Europe's center for business, culture, and opportunity.
- Accredited and Government-Recognized Programs - Graduate with a state-controlled Visa diploma and RNCP Level 7 title, providing both national validation and international relevance.
- Industry-Aligned Curriculum - Programs are developed in close consultation with employers to reflect the latest market needs and practices.
- Expert Faculty with Real-World Insight - Learn from an accomplished mix of academic scholars and seasoned professionals with practical experience and deep subject expertise.
- Tailored Specializations - Choose from 15 career-focused tracks designed to equip you for leadership roles in evolving industries.
- Entrepreneurial Focus - Strengthen your innovation, leadership, and strategic thinking to succeed in entrepreneurial or intrapreneurial environments.
- Inclusive and Accessible Education - Study in an environment that prioritizes equity, affordability, and diverse learning pathways.
- Global Alumni Community - Tap into an active international network of graduates making an impact in business and beyond.
- Career-Centered Learning Experience - Benefit from strong industry connections, real-world projects, and dedicated career support that align your studies with long-term goals.

Empower Your Next Move

Program Flexibility

Empowering Professionals to Learn on Their Terms

ISTEC Business School recognizes the evolving needs of today's professionals, demanding flexibility without compromising academic quality. Its MBA program is designed to adapt to diverse lifestyles, providing a globally accessible, structured learning experience.

100% Online Format - Study anytime, anywhere.

ISTEC's advanced digital platform enables students to:

- Access recorded lectures for on-demand learning
- Participate in interactive discussions and assignments
- Join live sessions with faculty and peers
- Receive personalized academic support and guidance

Whether managing a business, traveling frequently, or balancing professional responsibilities, students benefit from a seamless, high-quality learning journey that transcends time zones and geographic boundaries.

Non-term Enrollment - Begin when it suits your schedule.

With rolling admissions and a non-term academic model, ISTEC offers:

- Immediate enrollment upon application acceptance
- Flexible commencement dates
- Customizable academic calendars
- Self-paced program progression

Students may complete their MBA in as little as 12 months or extend to 18 months, aligning their studies with professional ambitions and personal commitments.





MBA Admissions

Empowering Professionals to Drive Meaningful Change

ISTEC Business School's MBA program is tailored for ambitious professionals committed to advancing their careers and making an impact within their industries. The admissions process takes a holistic approach, evaluating both academic credentials and leadership potential.

Admission Criteria

To be considered for the MBA program, applicants must meet the following requirements:

- A bachelor's degree from a recognized institution (in any discipline)
- Relevant professional work experience

Academic Counselor Guidance - Personalized Support from Enquiry to Enrollment.

From the initial enquiry to program enrollment, each applicant is guided by a dedicated academic counselor. ISTEC's experienced counselors provide:

- Personalized consultations to clarify career goals.
- Support in selecting the program format and specialization aligned with individual aspirations.
- Assistance in preparing the application and required documentation.
- Step-by-step guidance through the enrollment process.

This personalized support helps every student start the program with a clear understanding of what to expect and how it fits with their goal, whether they're aiming to lead teams, start a business, or take the next step in their career.

2025 Fee Structure:

Registration Fee: **AED 2,500**

Course Fees: **AED 3,500 x 12 = AED 42,000**

Administration Fee: **AED 6,000**

Total Fees: AED 50,500

- Convocation/Graduation Ceremony Fee - To be informed later
- Certificate Attestation: AED 2500

- 5% VAT exclusive
- Refer to the Course Fee Contract for other charges.
- Any fees paid are non-refundable under any circumstances

CEFDG

CONFERENCE DES
GRANDES
ÉCOLES

Erasmus+

cdefm

CAMPUS
FRANCE
campusfrance.org

EFMD
GLOBAL
NETWORK



AACSB
Business
Education
Alliance
Member



Corporate Office
Sharjah

407 | 408
Rolla Mall, Rolla
Sharjah, UAE

Academic Office
Abu Dhabi

403 | 404, Suroor Bldg.
Muroor Street,
Abu Dhabi, UAE

Academic Office
Bahrain

Bader 2, Office 32
Bldg.50, Seef 434
Bahrain

Academic Office
Dubai

501, Bay Square-12
Business Bay
Dubai -UAE

ISTEC Business
School, France

128, Quai de
Jemmapes 75010
Paris